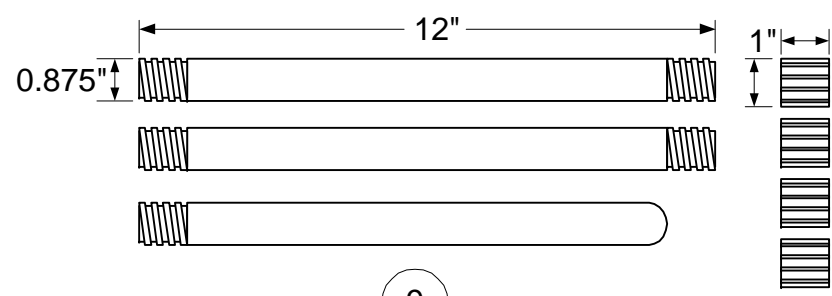


↓  
BEAM DIRECTION

NOTE: CIRCLED NUMBERS REFER TO BILL OF MATERIAL ITEMS

DESIGN: A.W. BAKER	09/23/02
TESTED: A.W. BAKER	09/28/02

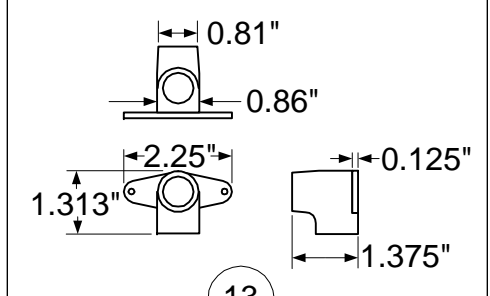
<span style="font-size: 2em; font-weight: bold; vertical-align: middle;">KG4JJH</span>		
<b>BLACK WIDOW PORTABLE 15 METER BEAM ASSEMBLY</b>		
SCALE: 1/16:1	SHEET 1 OF 4	REV. 0



9

**SPREADER**

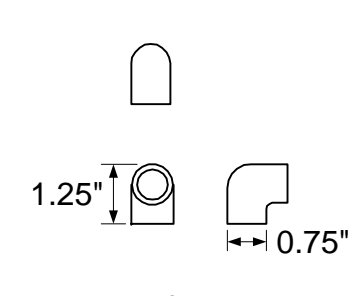
MAT'L: THREE PIECE EXTENSION POLE KIT  
 MODIFICATIONS: CUT 2 SOCKETS IN HALF  
 REQ'D: 2 EACH



13

**FEEDPOINT**

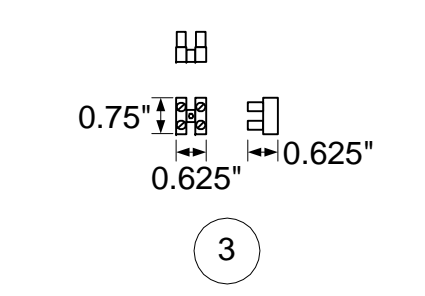
MAT'L: CPVC DROP EAR 90°  
 ELBOW  
 REQ'D: 1 EACH



14

**FEEDPOINT**

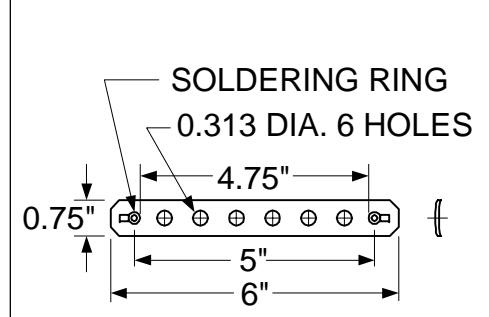
MAT'L: CPVC 90° ELBOW  
 REQ'D: 1 EACH



3

**FEEDPOINT**

MAT'L: TERMINAL STRIP  
 MODIFICATIONS: REMOVE 6  
 TERMINALS  
 REQ'D: 1 EACH

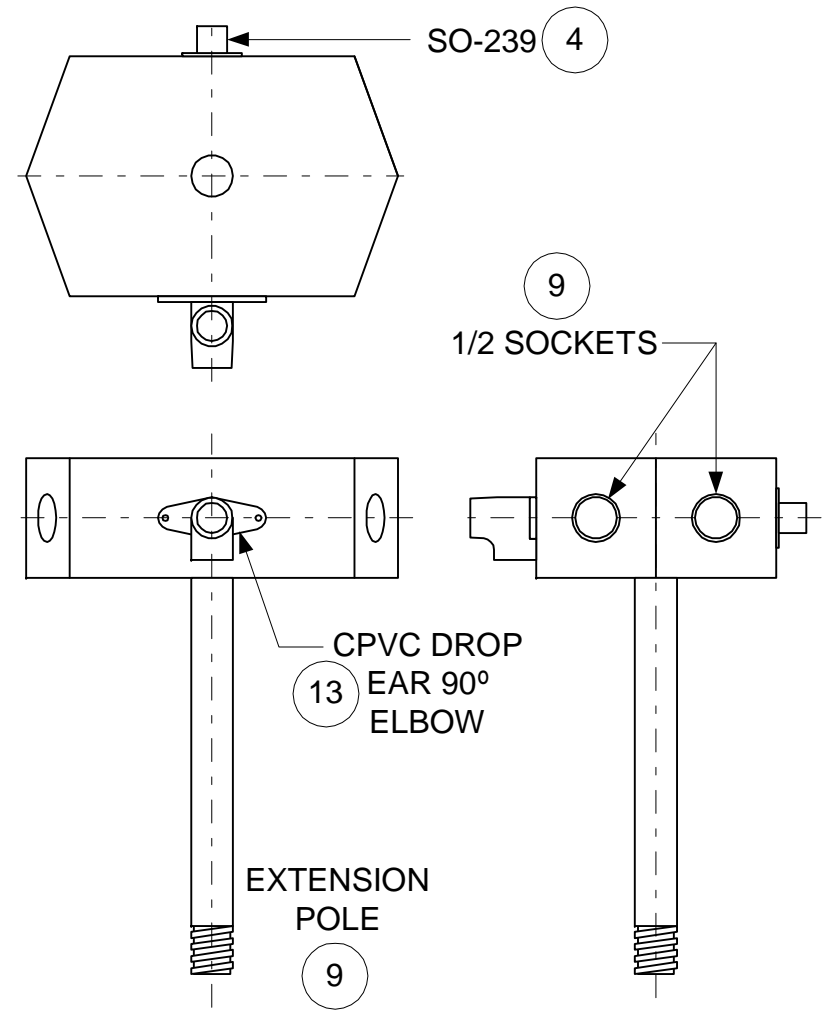


**SOLDERING RING**

0.313 DIA. 6 HOLES

**INSULATOR**

MAT'L: PVC PIPE SCRAP  
 REQ'D: 2 EACH



SO-239 4

9

1/2 SOCKETS

CPVC DROP  
 EAR 90°  
 ELBOW

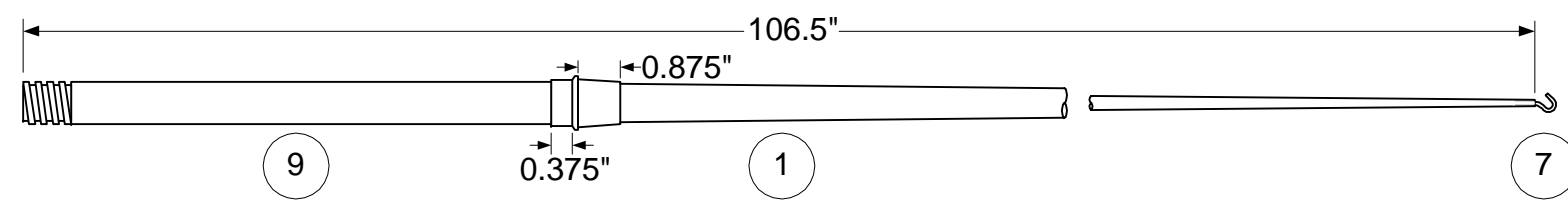
13

EXTENSION  
 POLE

9

**HUB ASSEMBLY**

REQ'D: 1 EACH



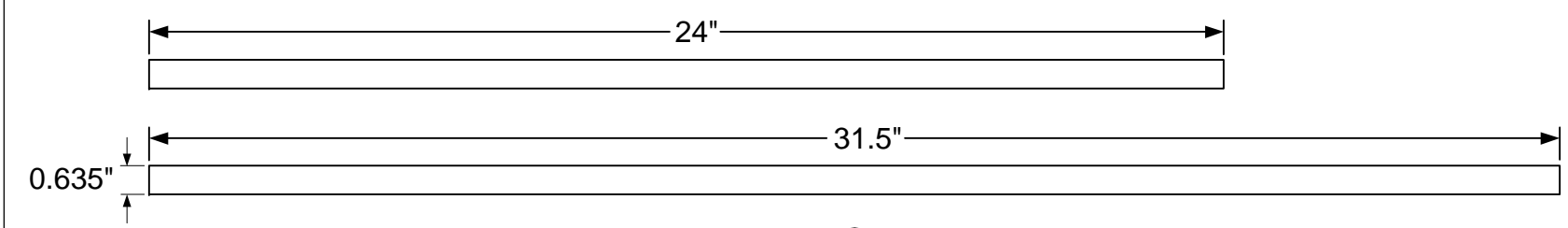
**SPREADER**

MATERIALS: EXTENSION POLE, 3-SECTION FISHING ROD, SCREW HOOK  
 MODIFICATIONS: EPOXY EXT. POLE INTO HANDLE, CUT POLE TIP, EPOXY SCREW HOOK IN END  
 REQ'D: 4 EACH

SECTION 1: 43.375"  
 START OD = 0.780"  
 END OD = 0.650"

SECTION 2: 37"  
 START OD = 0.560"  
 END OD = 0.323"

SECTION 3: 13.875"  
 START OD = 0.266"  
 END OD = 0.205"



12

**FEEDPOINT**

MATERIAL: CPVC 1/2" PIPE  
 MODIFICATIONS: CUT TO FIT (SEE TEXT)  
 REQ'D: 1 EACH

NOTE: CIRCLED NUMBERS REFER TO BILL OF MATERIAL ITEMS

DESIGN: A.W. BAKER 09/23/02

TESTED: A.W. BAKER 09/28/02



**KG4JJH**

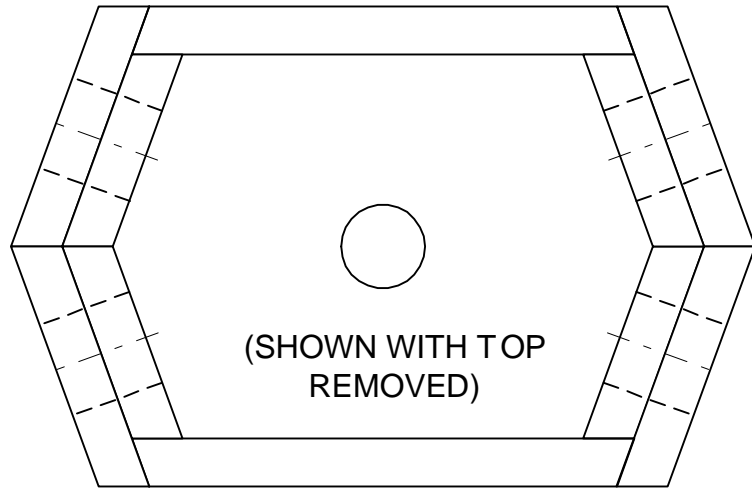
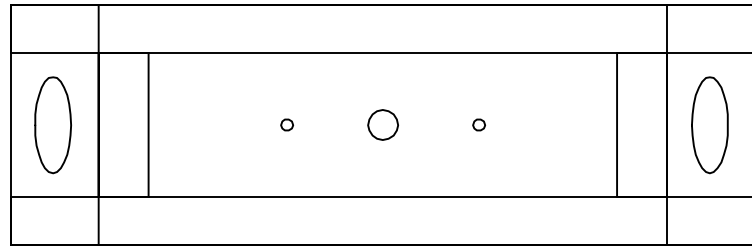


**BLACK WIDOW  
 PORTABLE 15 METER BEAM  
 DETAILS**

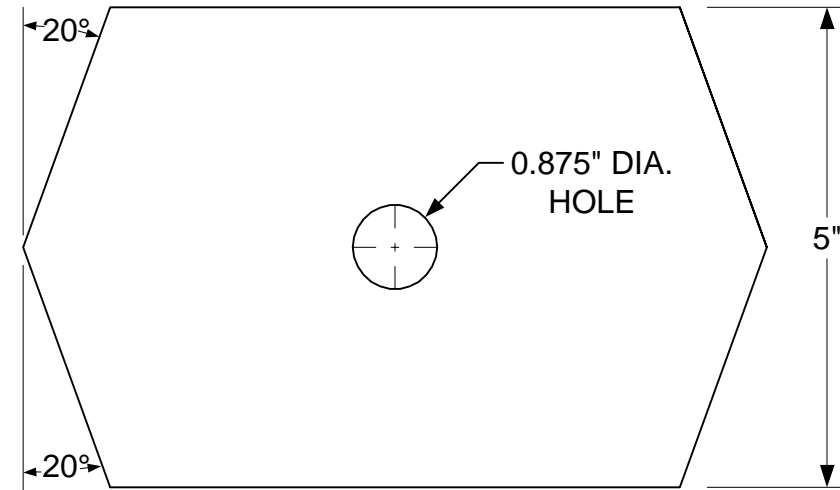
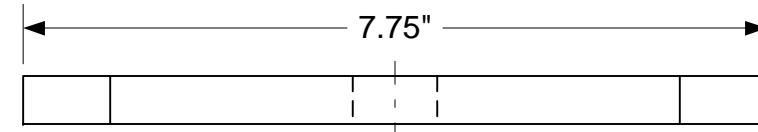
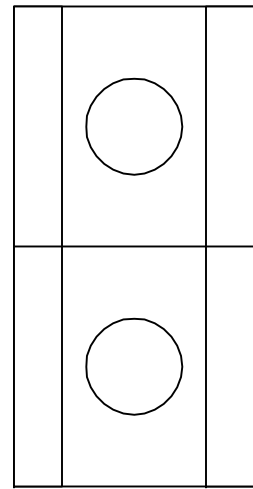
SCALE: 1/4:1

SHEET 2 OF 4

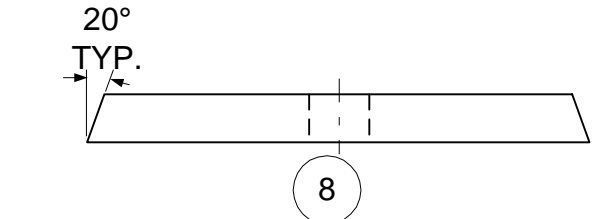
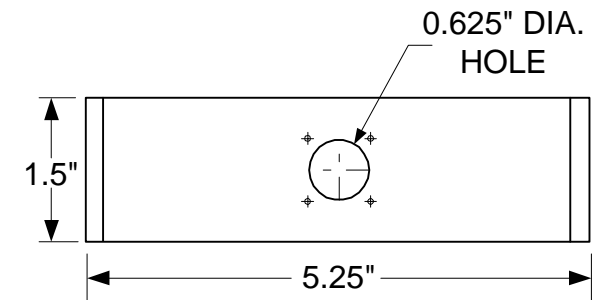
REV. 0



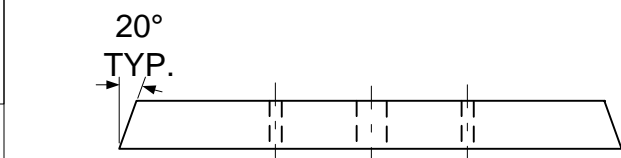
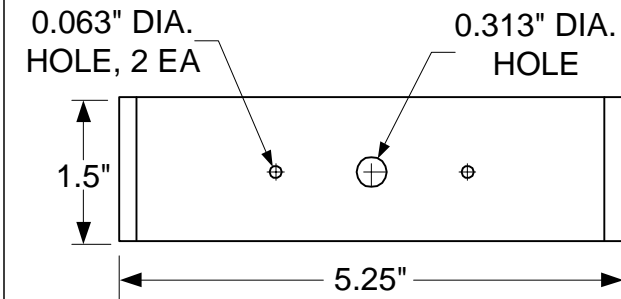
**HUB ASSEMBLY**  
MATERIAL: 1/2" POPLAR  
REQ'D: 1 EACH



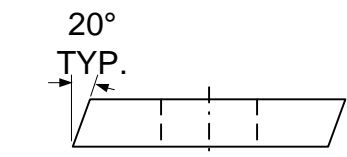
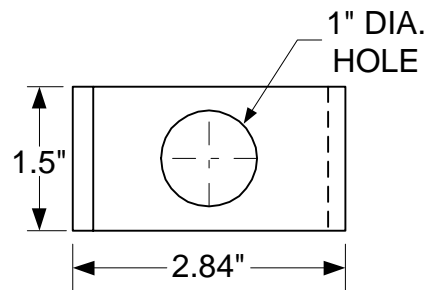
**HUB TOP/BOTTOM**  
MATERIAL: 1/2" POPLAR  
REQ'D: 2 EACH



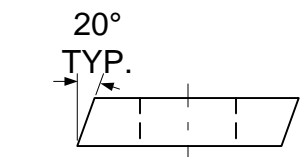
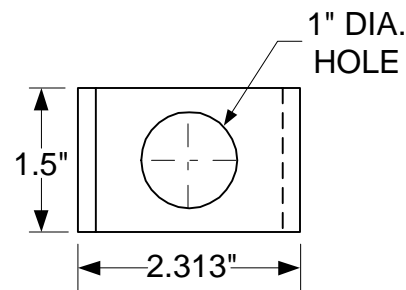
**HUB BACK**  
MATERIAL: 1/2" POPLAR  
REQ'D: 1 EACH



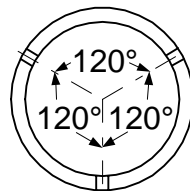
**HUB FRONT**  
MATERIAL: 1/2" POPLAR  
REQ'D: 1 EACH



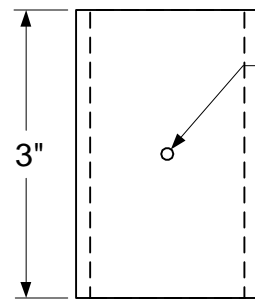
**HUB SIDE**  
MATERIAL: 1/2" POPLAR  
REQ'D: 4 EACH



**HUB SIDE DOUBLER**  
MATERIAL: 1/2" POPLAR  
REQ'D: 4 EACH



OD = 1.90"  
ID = 1.61



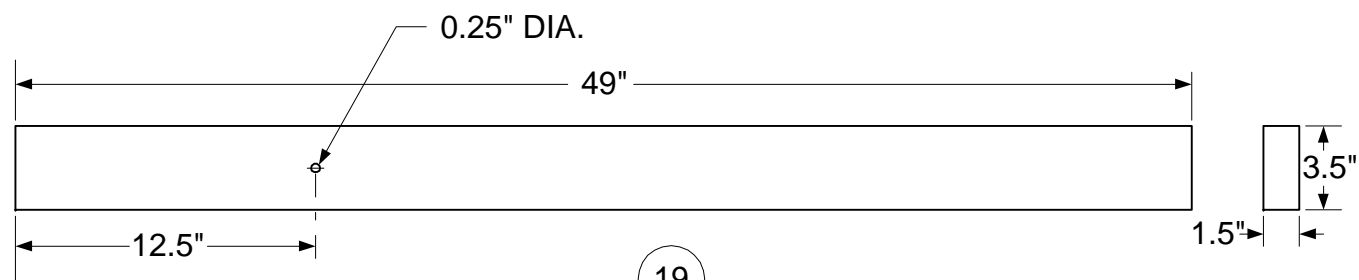
**MAST GUYING RING**  
MATERIAL: 1.5" PVC COUPLING  
REQ'D: 1 EACH

DESIGN: A.W. BAKER	09/23/02
TESTED: A.W. BAKER	09/28/02



**BLACK WIDOW**  
**PORTABLE 15 METER BEAM**  
**HUB DETAILS**

NOTE: CIRCLED NUMBERS REFER TO BILL OF MATERIAL ITEMS

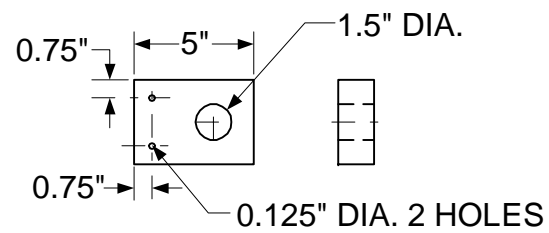


19

**TRAILER HITCH MAST SUPPORT**

MAT'L: 2" X 4" PINE

REQ'D: 1 EACH

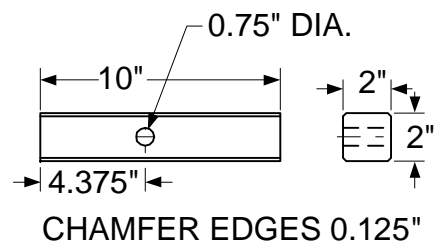


19

**TRAILER HITCH MAST SUPPORT**

MAT'L: 2" X 4" PINE

REQ'D: 2 EACH

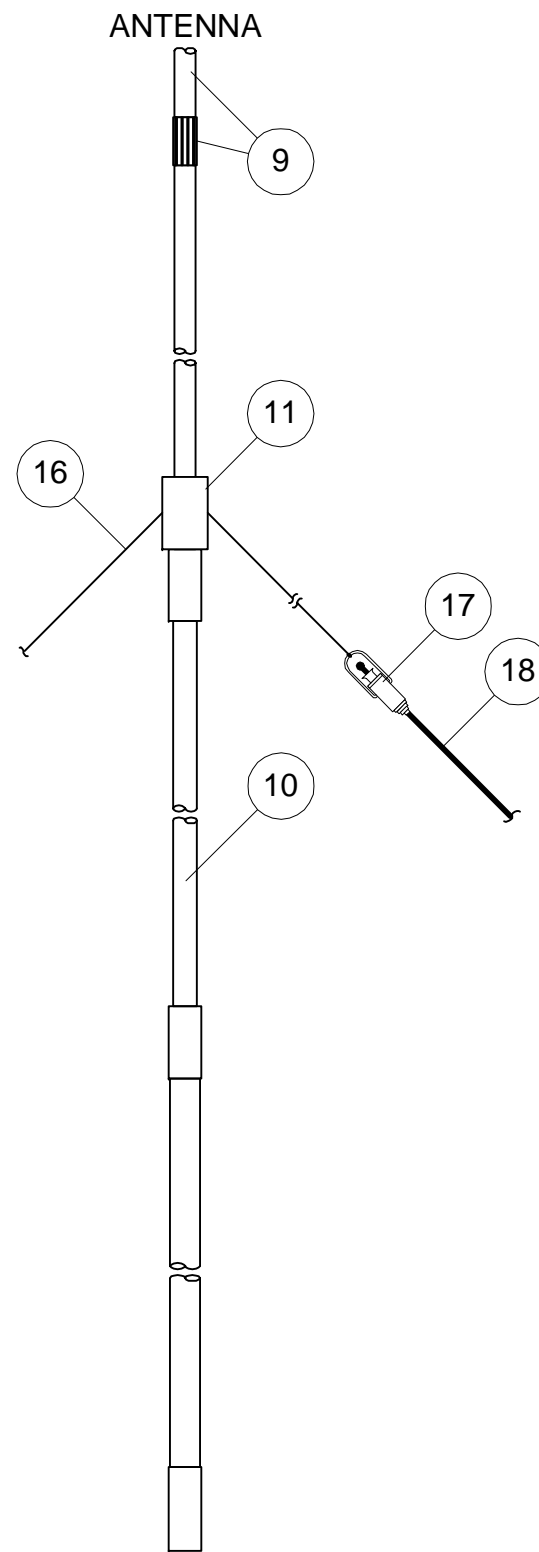


**TRAILER HITCH MAST SUPPORT**

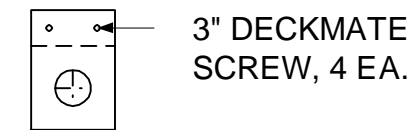
MAT'L: GLUED-UP 1/8" LITE-PLY

OR 1/2" PLYWOOD

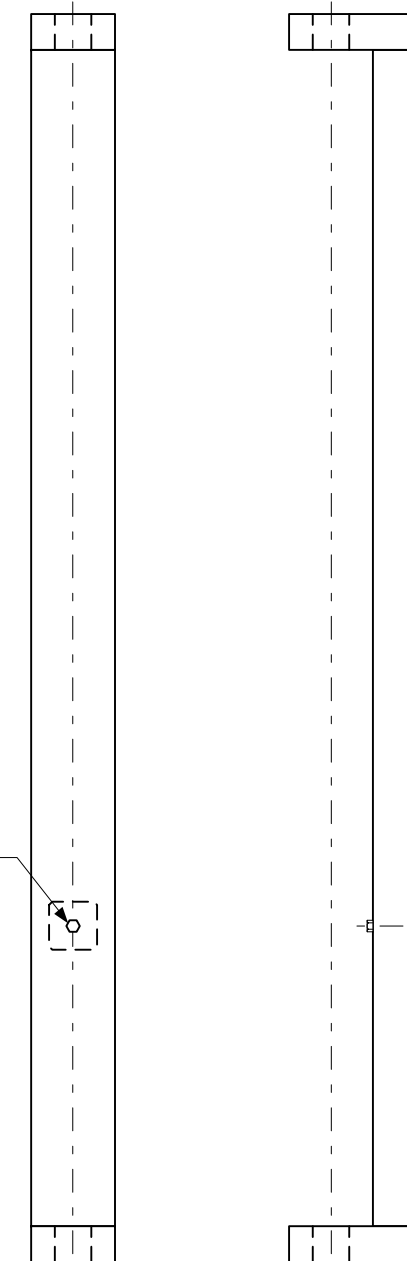
REQ'D: 1 EACH



**MAST ASSEMBLY**



3" DECKMATE  
SCREW, 4 EA.



**TRAILER HITCH MAST SUPPORT  
ASSEMBLY**

20

3" X 3" X 0.75"  
ANGLE BRACKETS  
WITH SCREWS

1/4" X 4" LAG  
SCREW

NOTE: CIRCLED NUMBERS REFER TO BILL OF MATERIAL ITEMS

DESIGN: A.W. BAKER 09/23/02

TESTED: A.W. BAKER 09/28/02



**KG4JJH**



**BLACK WIDOW  
PORTABLE 15 METER BEAM  
MAST SUPPORT**

SCALE: 1/8:1

SHEET 4 OF 4

REV. 0