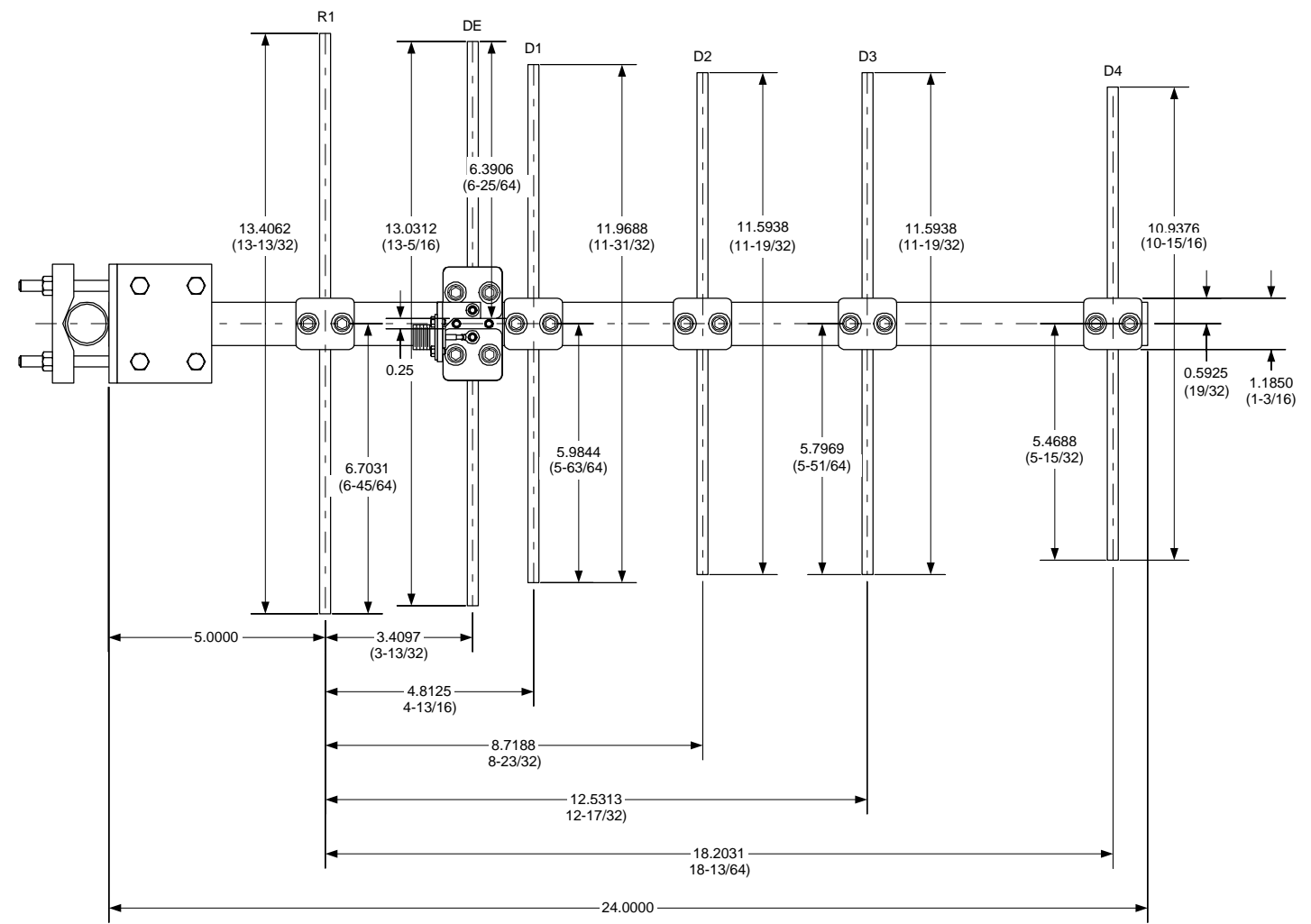
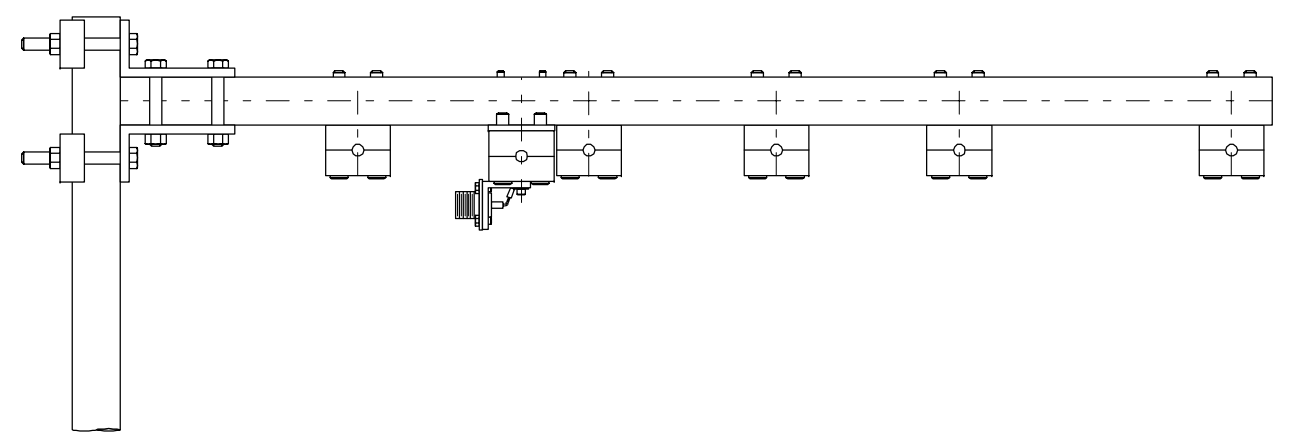


ITEM	QTY	PART NO.	DESCRIPTION	SOURCE
1	24 IN.	T3118	SQUARE TUBE, ALUMINUM, 1" X 1" X 1/8" WALL	WWW.MCMASTE R.COM
2	7 FT.		ALUMINUM ROD, EXTRUDED, 1/4" OD	WWW.TEXASTOWERS .COM
3	7	DXE-RSB-I02500	RESIN SUPPORT BLOCK CLAMP, 1/4"	WWW.DXENGINEERING. COM
4	14	92196A279	SOCKET CAP SCREW, 1/4-20 X 2", STAINLESS	WWW.MCMASTE R.COM
5	14	98437A110	LOCKWASHER, 1/4, STAINLESS	WWW.MCMASTE R.COM
6	1		ALUMINUM FLAT, 1-3/8" X 2-5/8" X 1/8"	WWW.HOMEDEPOT. COM
7	1		MAST, 1" TO 1-1/2" OD, ALUMINUM	WWW.TEXASTOWERS .COM
8	1	M/B	MOUNTING BRACKET FOR 1" SQUARE BOOMS	WWW.ARROWANTENNA S.COM
9	6	92196A201	HEX SOCKET SCREW, 8-32 X 1-1/4", STAINLESS	WWW.MCMASTE R.COM
10	2	92196A150	HEX SOCKET SCREW, 6-32 X 5/8", STAINLESS	WWW.MCMASTE R.COM
11	2	98437A104	LOCKWASHER, #6, STAINLESS	WWW.MCMASTE R.COM
12	2	7113K815	RING TERMINAL, #6, 16-14 AWG	WWW.MCMASTE R.COM

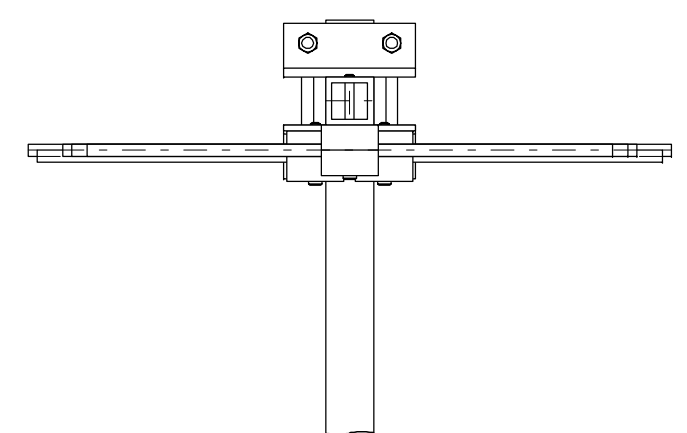
NOTES
1. THERE ARE TWO 6-25/64" LONG DRIVEN ELEMENTS.
2. EZNEC DATA:
Fo = 438MHz
FREE SPACE: GAIN = 10.22 dBi (8.1 dB), F/B = 29.5 dB.
30 FT. ELEVATION: GAIN = 16.14 dBi (12.5 dB), F/B = 29.5 dB



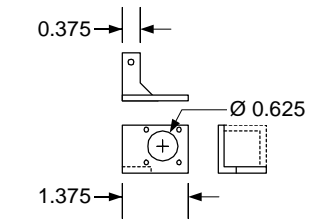
BOTTOM VIEW



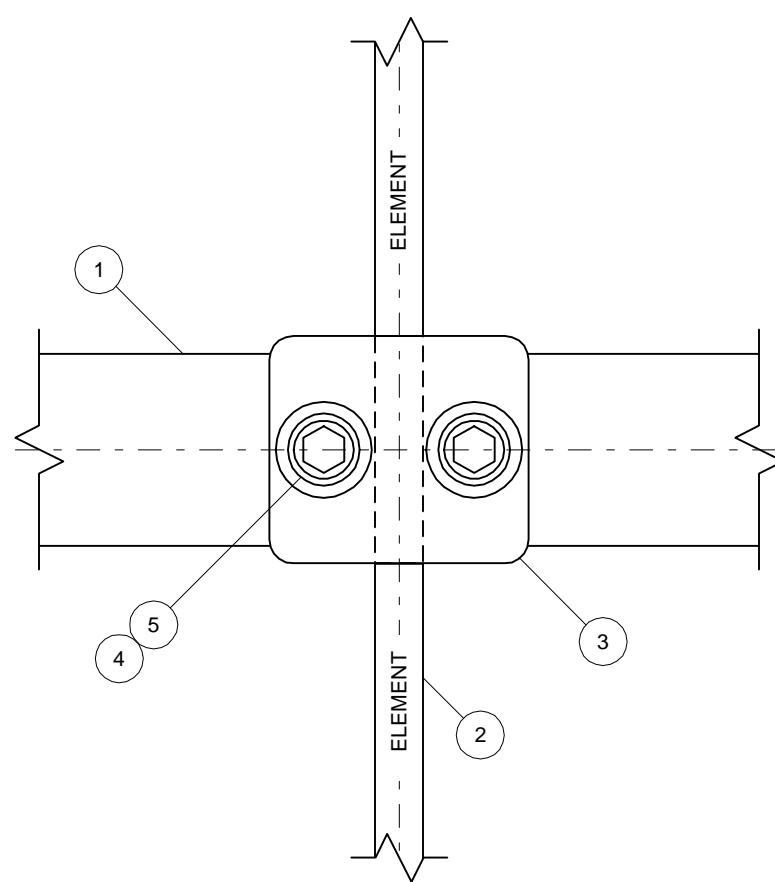
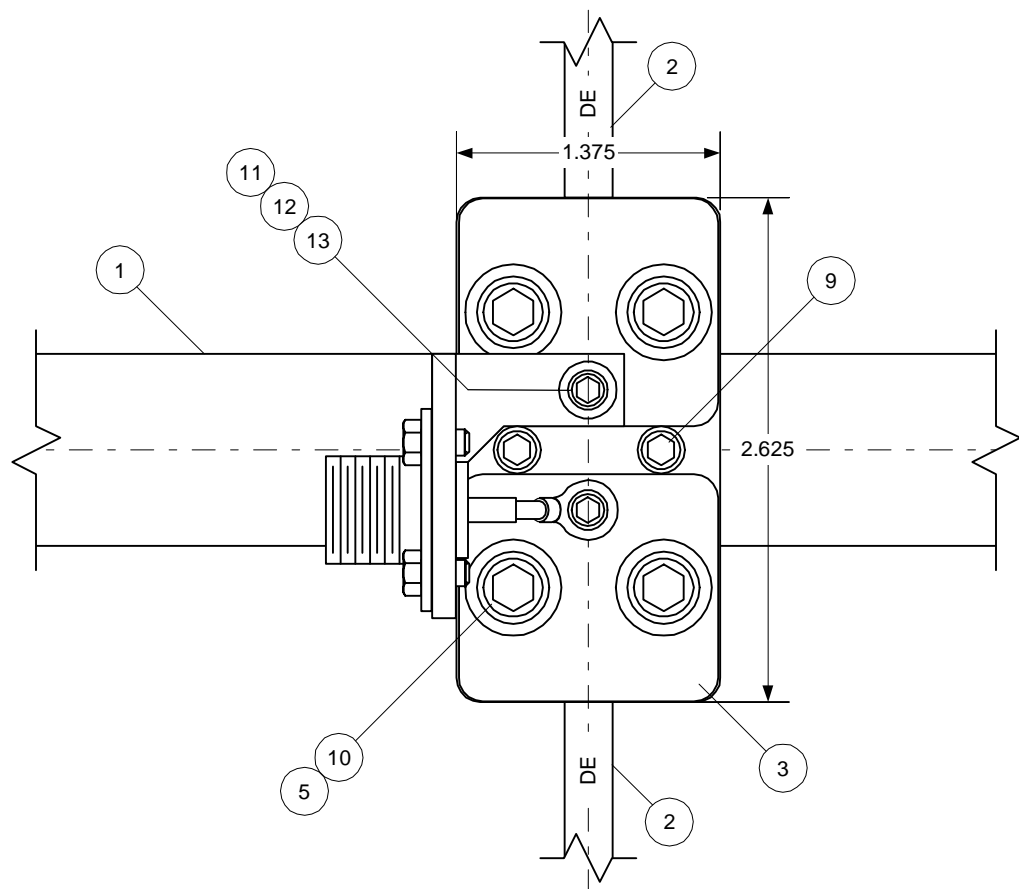
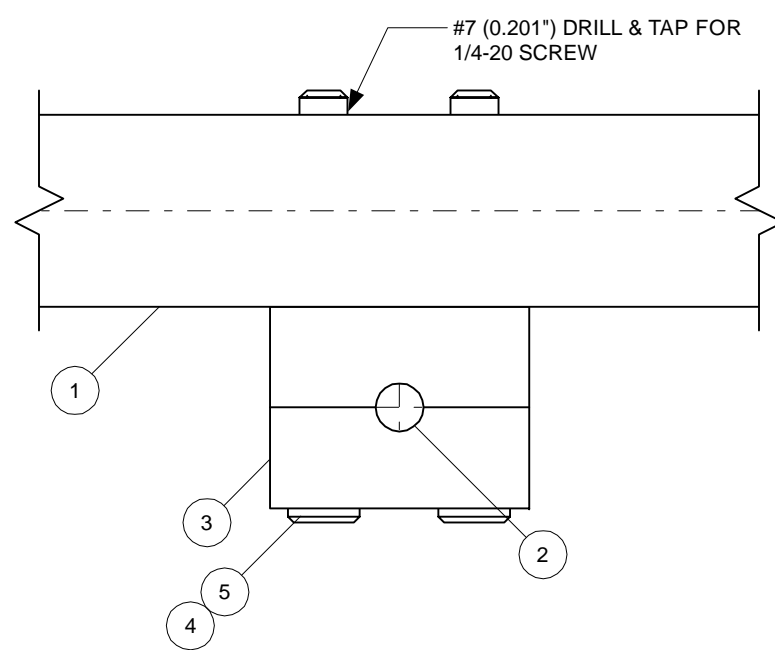
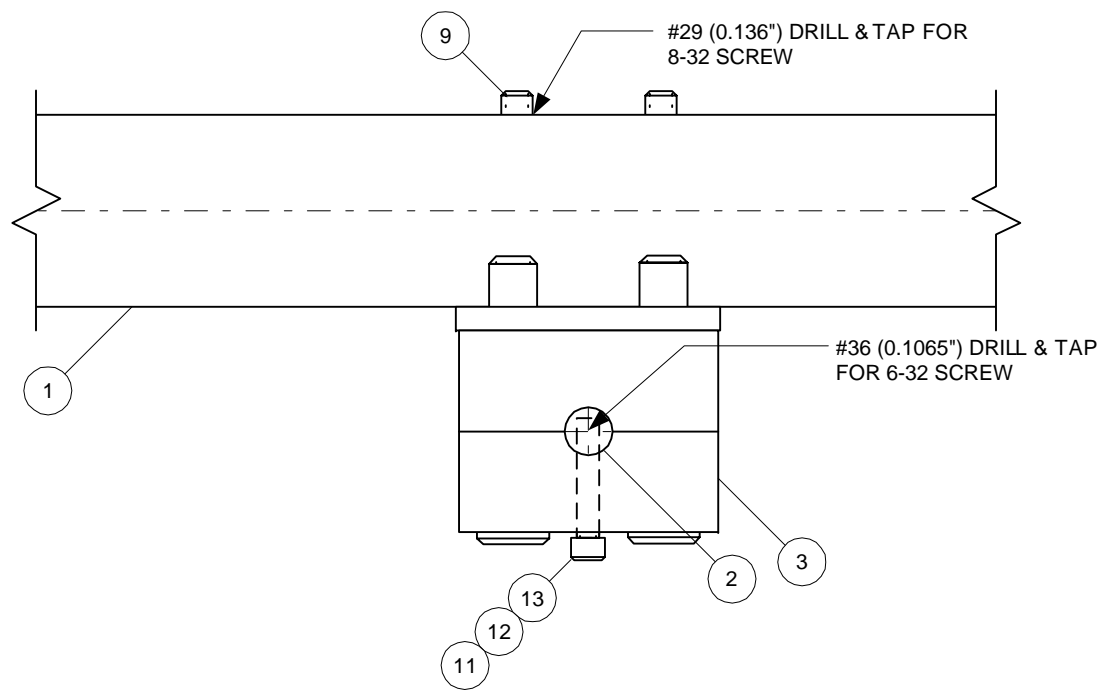
SIDE VIEW



END VIEW



KG4JJH		
70 CM, 6 EL, OWA YAGI ASSEMBLY		
SCALE: 1/4:1	SHEET 1 OF 2	REV. 0



DETAIL A
DRIVEN ELEMENT

DETAIL B
REFLECTOR & DIRECTORS

KG4JJH		
70 CM, 6 EL, OWA YAGI ASSEMBLY		
SCALE: 1/4:1	SHEET 2 OF 2	REV. 0