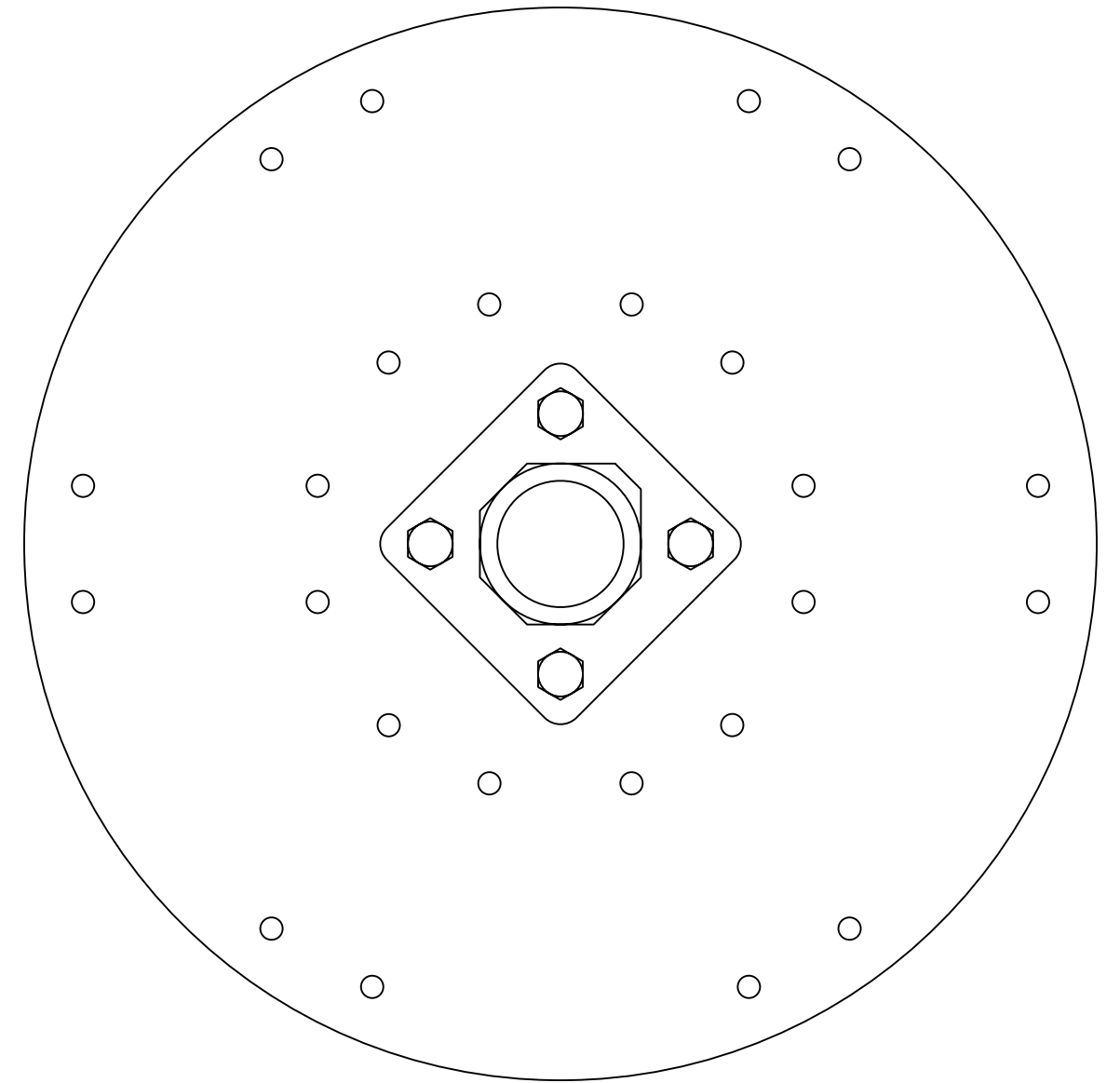
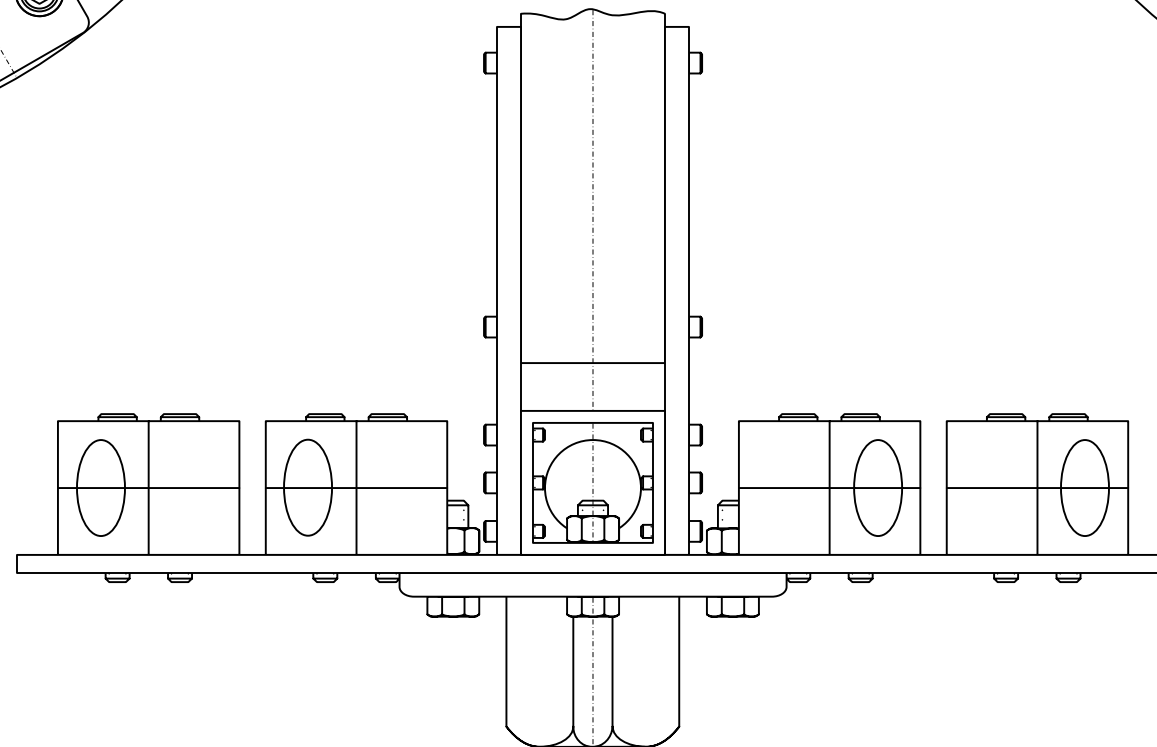


TOP VIEW

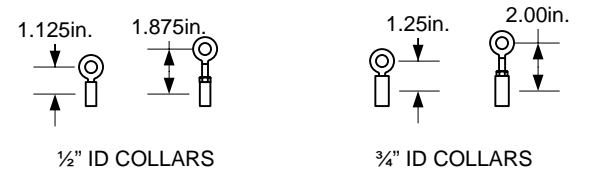
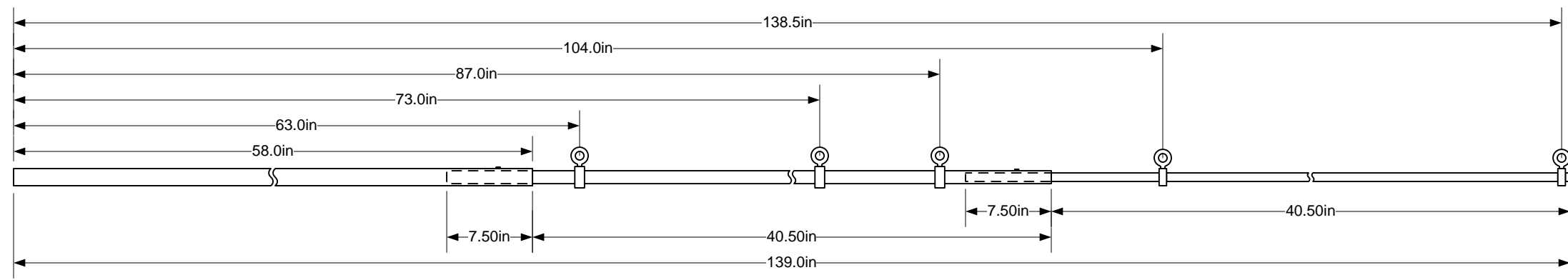
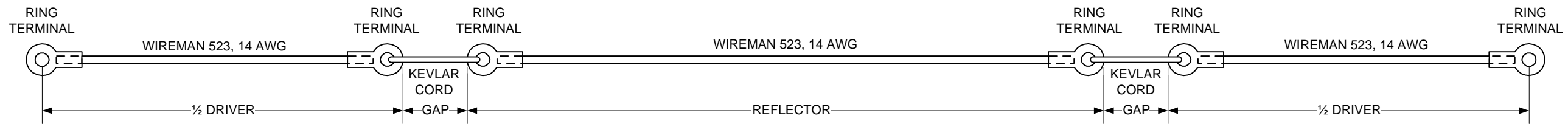


BOTTOM VIEW

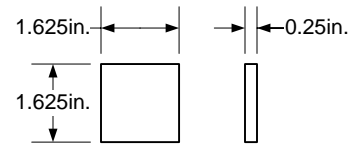
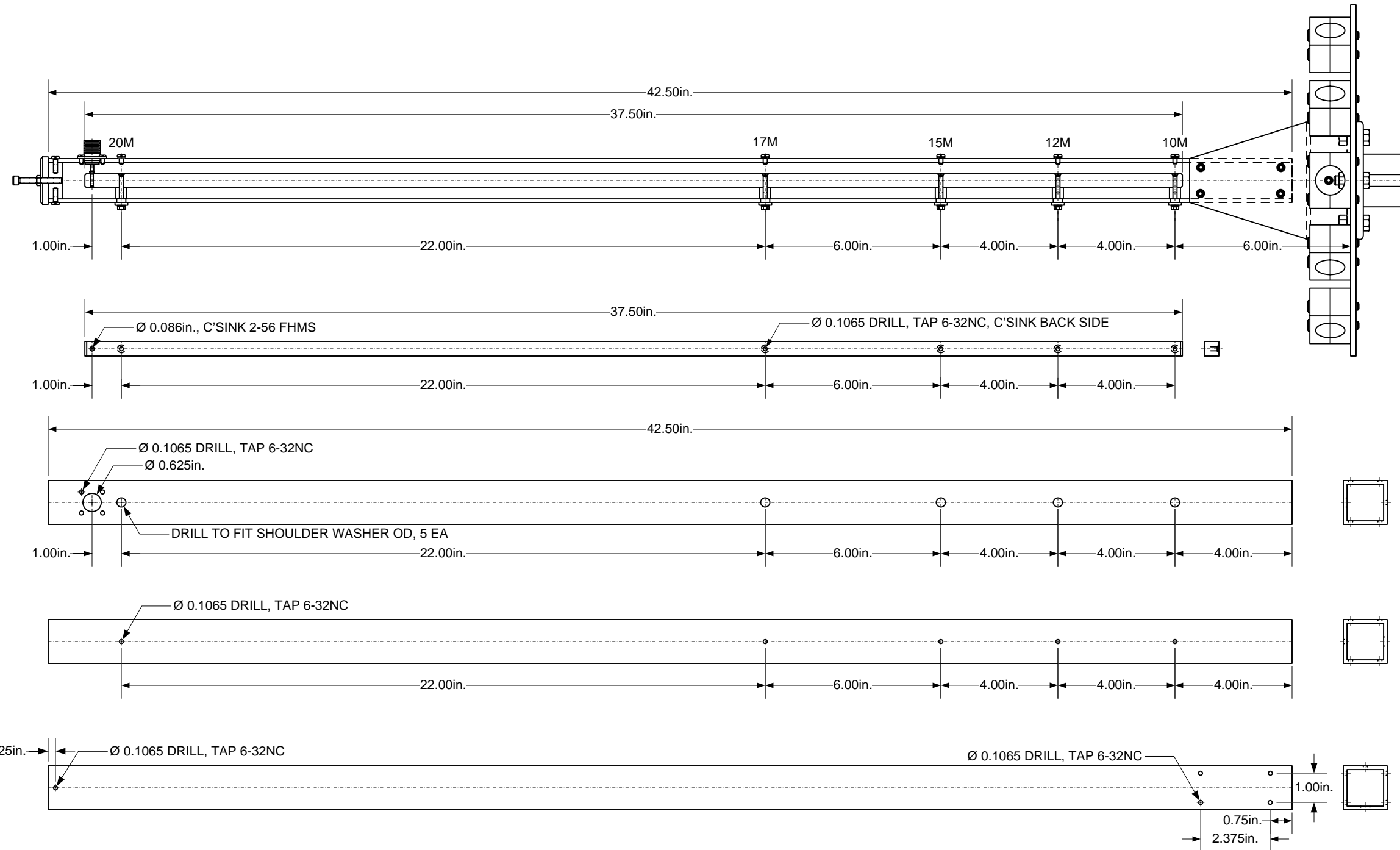
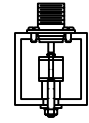


VIEW A-A

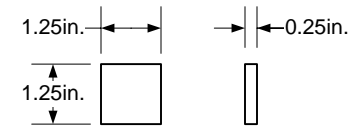
DESIGN: A. BAKER	02/25/09	KG4JJH	
		HEXBEAM HUB ASSEMBLY	
		SCALE: 1/2:1	SHEET 1 OF 4
			REV. 0



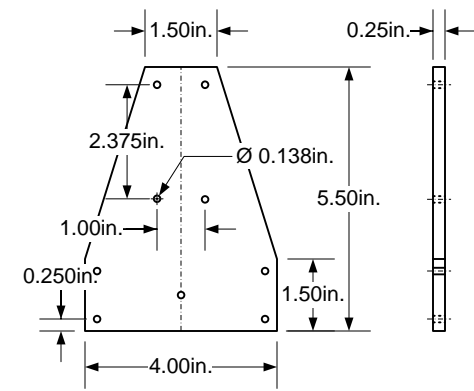
DESIGN: A. BAKER	02/25/09	KG4JJH		
				HEXBEAM ELEMENTS & SPREADERS
		SCALE: 1/8:1	SHEET 2 OF 4	REV. 0



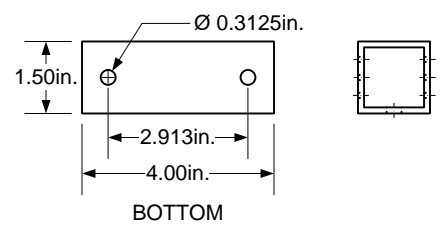
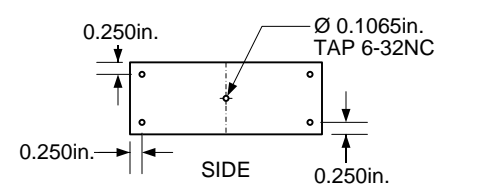
CAP TOP
MATERIAL: ¼" FIBERGLASS
REQ'D: 1 EA



CAP BOTTOM
MATERIAL: ¼" FIBERGLASS
REQ'D: 2 EA

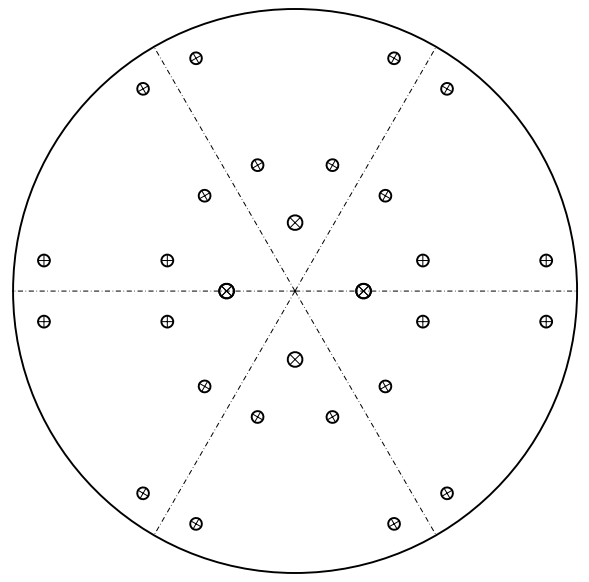
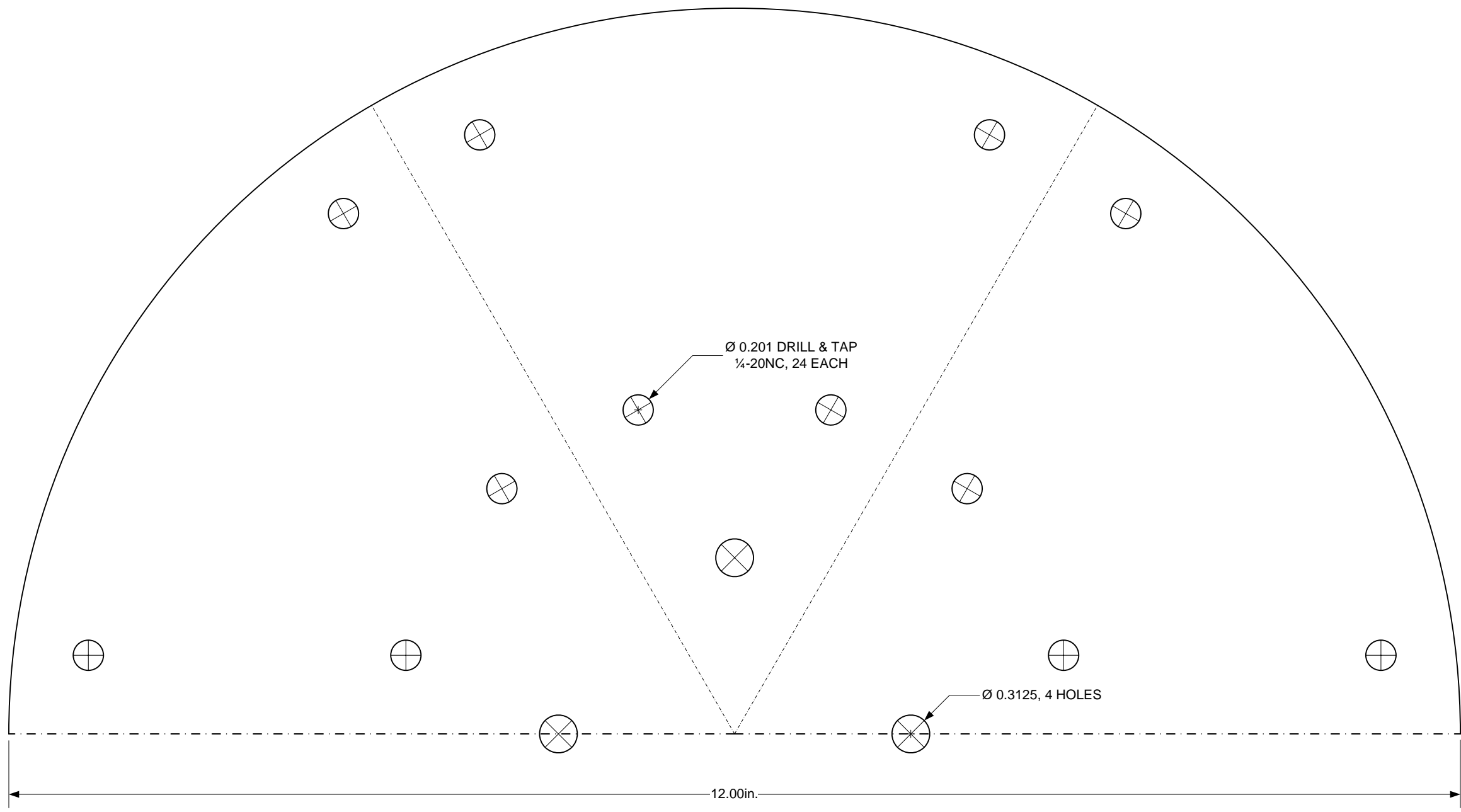


FEED BRACKET
MATERIAL: ¼" FIBERGLASS
REQ'D: 2 EA



FEED MOUNT
MATERIAL: 1.5"X1.5" ALUM SQUARE
REQ'D: 1 EA

DESIGN: A. BAKER	02/25/09	<h1>KG4JJH</h1>		
				<h2>HEXBEAM FEEDPOINT ASSEMBLY</h2>
		SCALE: 1/4:1	SHEET 3 OF 4	REV. 0



PRINT TWO FULL SIZE COPIES & TAPE TOGETHER

DESIGN: A. BAKER	02/25/09	KG4JJH	
		HEXBEAM HUB TEMPLATE	
		SCALE: 1:1	SHEET 4 OF 4
			REV. 0